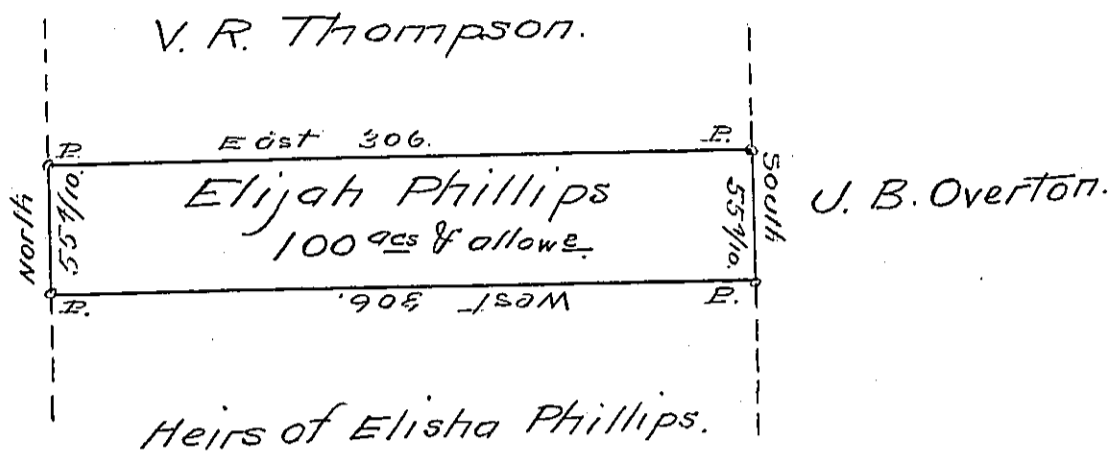


Holland Company Land.



Draft of a Tract of Land situate in Pine Grove  
 Township Warren County West of the Conewango -  
 Creek Containing One Hundred acres & allowance  
 Surveyed the 20<sup>th</sup> day of December A. D. 1843 for -  
 Elijah Phillips it being part of a larger Tract of  
 land Surveyed for Joseph Akin the 27<sup>th</sup> day of  
 September A. D. 1820 by John Irvine Esq.

Witness my hand this 27<sup>th</sup> day of Sep-  
 tember A. D. 1843.

A. H. Ludlow D.S. W. Co.

Warren March 13<sup>th</sup> 1851

I certify the above to be a true copy from Survey  
 Book and that the said Land is not claimed by any other  
 person as I verily believe

A. H. Ludlow D.S.

IN TESTIMONY that the above is a copy of the original remaining on file in  
 the Department of Internal Affairs of Pennsylvania, made  
 conformably to an Act of Assembly approved the 16th day of  
 February, 1833, I have hereunto set my Hand and caused  
 the Seal of said Department to be affixed at Harrisburg,  
 this second day of June 1906

*George R. Brown*  
 Secretary of Internal Affairs.